

Supplementary Material

Figure captions

Figure S1-The standard curve of curcumin

Figure S2-Optical microscope images of Car/SPI nanoparticles under different pHs. (A) pH=4.5; (B) pH=4; (C) pH=3.5; (D) pH=3.0; (E) pH=2.5

Figure S3-The average particle size and encapsulation efficiency of nanoparticles. * indicates a significant difference between groups of 1:0.4 and 1:0 in particle size, $*P<0.05$; \triangle represents a significant difference between groups of encapsulation efficiency, $\triangle P<0.05$, $\triangle\triangle P<0.01$, $\triangle\triangle\triangle P<0.001$.

Figure S1

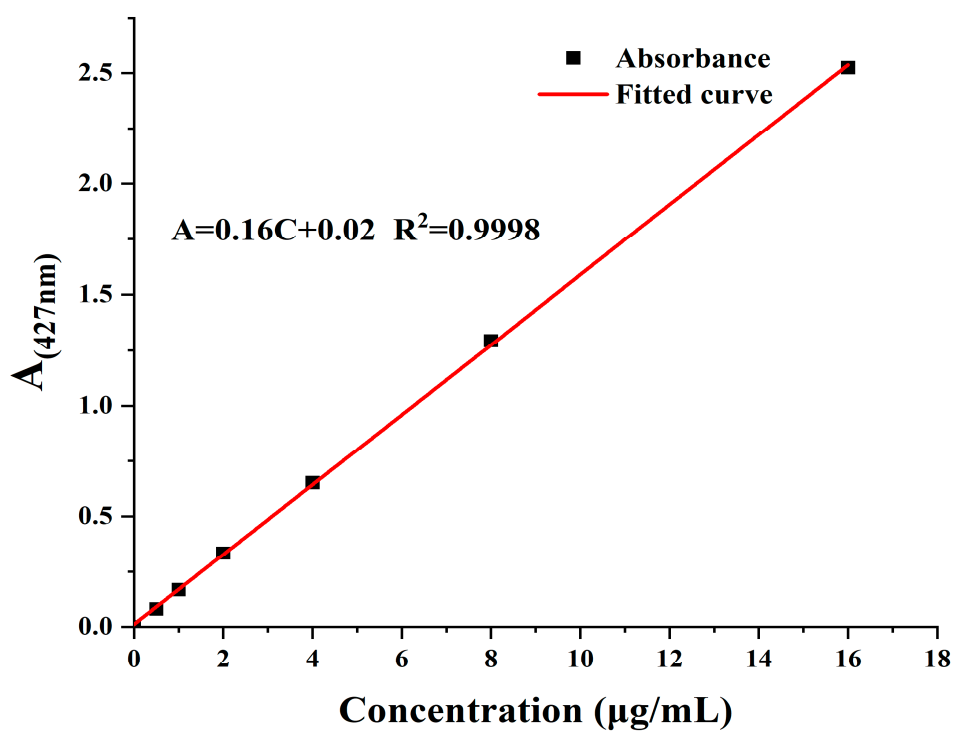


Figure S2

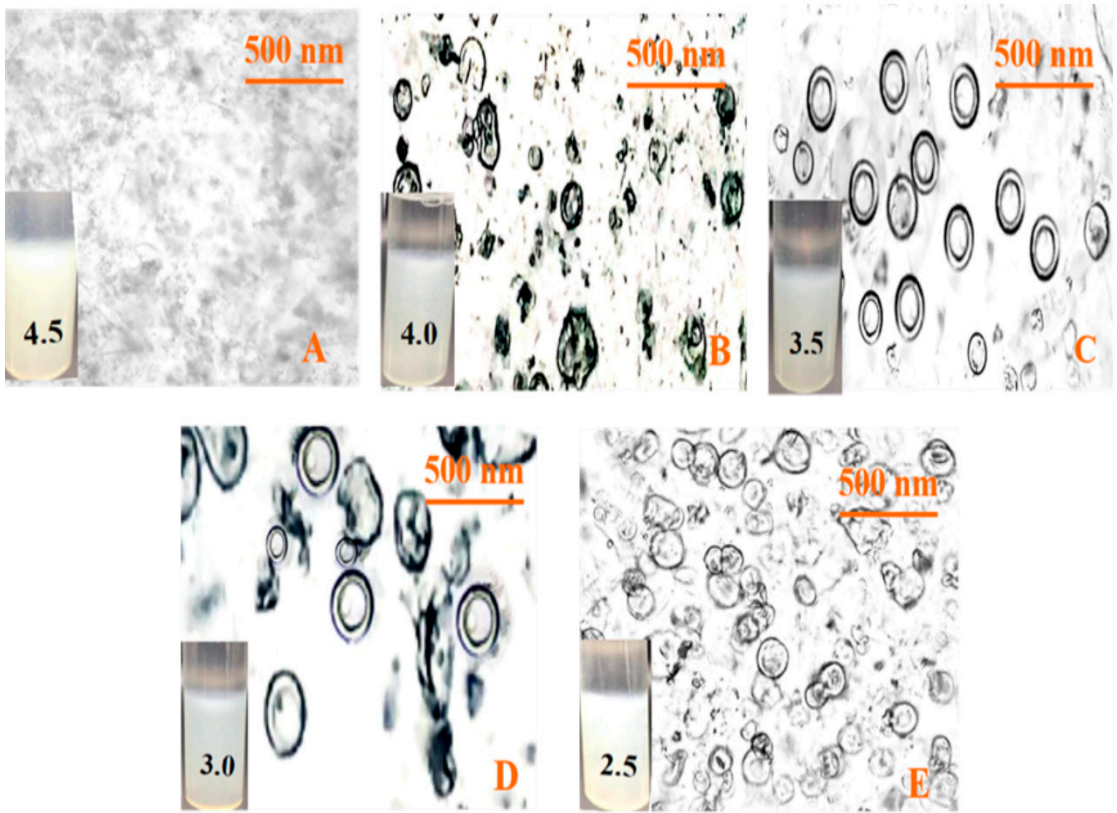


Figure S3

