

A Novel Indolium-based Fluorescent Probe for Fast Detection of Cyanide

Mei Ding¹, Xiao Xiao¹, Chen Zhou ^{1*}, Mingxin Luo¹ and Jing Sun¹

¹ School of Chemistry & Environmental Engineering, Jilin Provincial International Joint Research Center of Photo-functional Materials and Chemistry, Changchun University of Science and Technology, Changchun, 130022, People's Republic of China

Corresponding author: Chen Zhou

E-mail address: zhouchen@cust.edu.cn

Tel: +86431 85583894

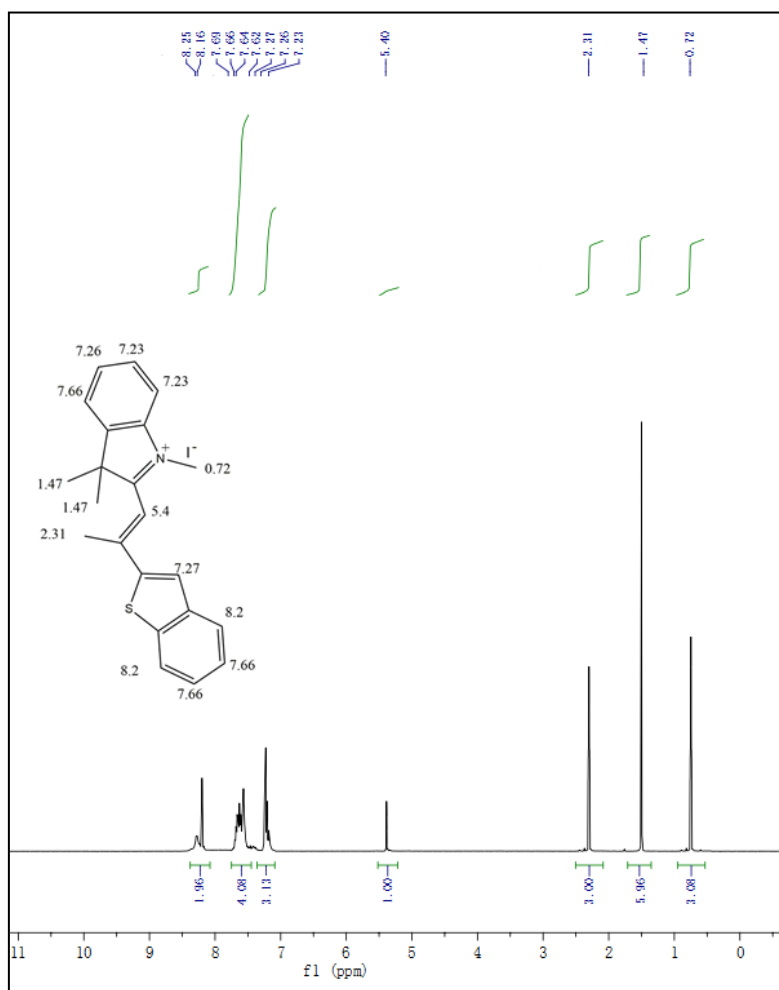


Figure S1. ¹H NMR spectrum of Probe 1

