

Supplementary Materials

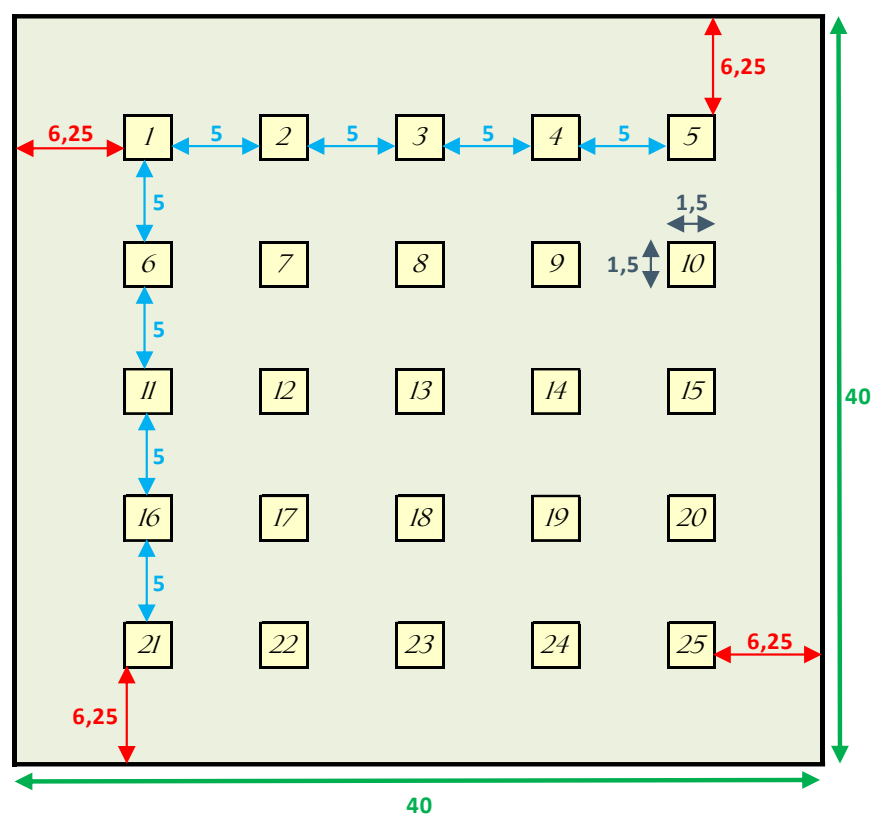


Figure S1. Location diagram of the 25 subplots within each study plot. Measurements are given in meters [60].

Table S1. Measurement dates.

Measurement Number	Year	Month
1	2006	July
2	2006	September
3	2006	November
4	2007	May
5	2007	November
6	2008	July
7	2008	November
8	2009	November
9	2011	March
10	2011	October
11	2012	July
12	2013	October-November
13	2014	October-November
14	2016	July
15	2017	November
16	2020	July

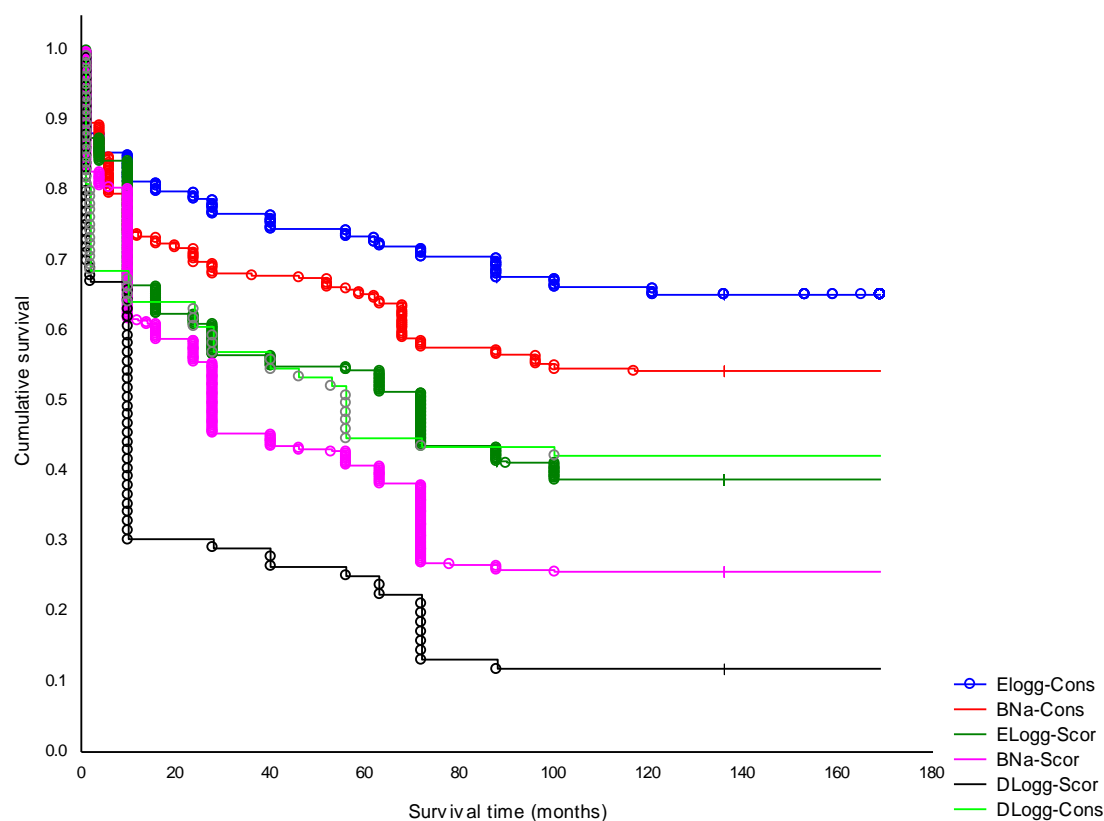


Figure S2. Graphical output for survival analysis using the Kaplan-Meier product-limit method as a function of the six possible combinations between the three of post-fire management treatments (ELogg, Early wood logging; DLogg, delayed wood logging; BNa, Burn no action) and the two fire severity degrees studied (Cons, consumed or extreme fire severity; Scor, scorched or moderate fire severity).

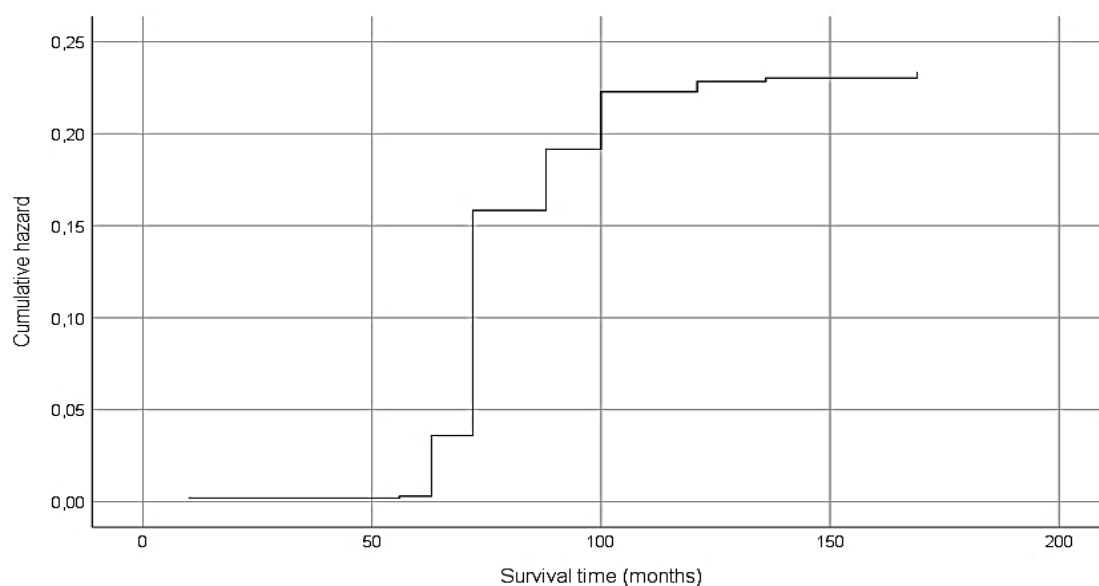


Figure S3. Hazard graphic of survival analysis model in function of slope percentage, stoniness, woody debris presence, interspecific competition in 2009, intraspecific competition in 2011 and competition index in 2011 (ratio between the height of the competitors and the height of the maritime pine).

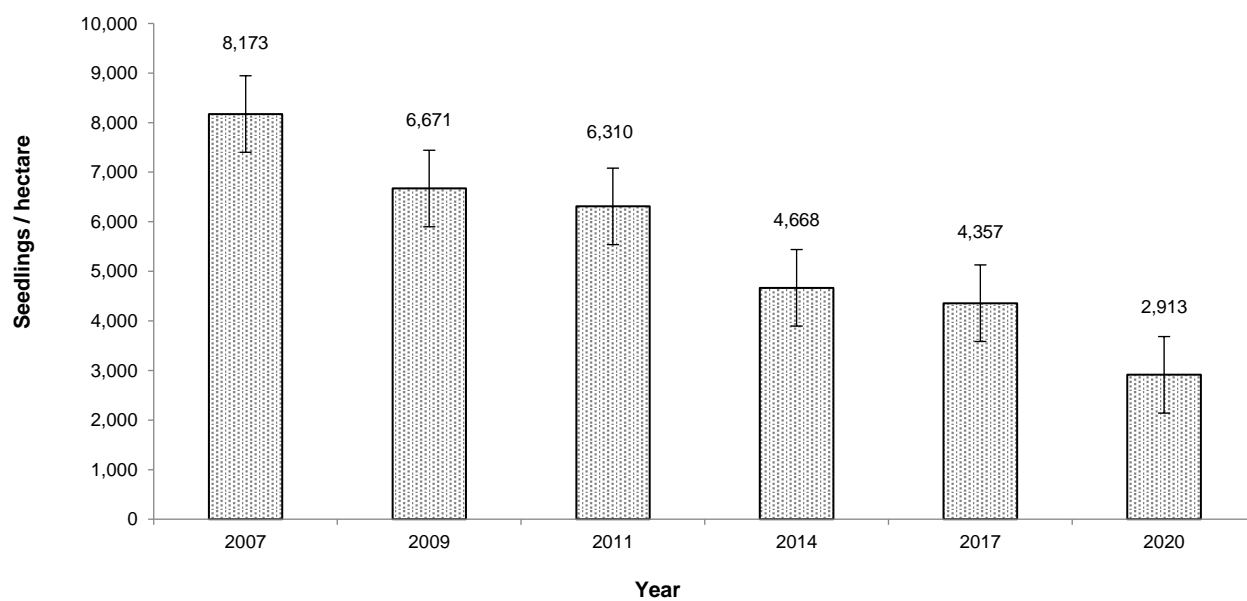


Figure S4. Evolution of overall estimated density (seedlings per hectare) at various dates over the study period (2007, 2009, 2011, 2014, 2017, 2020). Bars indicate standard error.